

KIN HOUSE



Kington Langley, Wiltshire, SN15 5NA

Fringing the pretty village of Kington Langley in north Wiltshire, Kin House is a Grade II*-listed manor set among walled gardens and private woodland. Inside you'll find 12 bedrooms, lounges, bars and dining spaces, as well as a main hall for bigger celebrations, created by interior design studio Barlow & Barlow.

While you're with us you can expect a hotel-style experience—think round-the-clock service, comfy spaces and considered interiors – but tailored to private stays. Settle in and treat us as your own country house for a day, a weekend, or more.

Whether you're planning the launch party of the year, a birthday celebration, or your team needs time away from their desks, we're ideally suited to private parties, away days and relaxing retreats.

• • •



GATHER 04-12
SET-UPS 13-22
DO 23-26
SLEEP 27-30
FEAST 31-33
GALLERY 34-37
INFO 38-39

A dining table is elegantly set for a gathering. The table is covered with a white tablecloth and features several place settings. Each setting includes a white plate, a green napkin, and a woven placemat. The table is decorated with lit pink candles in glass holders and small glass vases containing white flowers. The background shows a rustic interior with wooden walls and a white chair. The entire scene is framed by a decorative white border with a repeating pattern.

GATHER

Chapter 01

KIN HOUSE



STUDY

A cosy lounge for meetings, presentations, smaller dinners or movie nights.



HEARTH ROOM

Dinners, lunches, board meetings, talks and theatre-style presentations in the heart of the house.







Photo credit: Marta D

DRAWING ROOM

The perfect place for afternoon tea, evening cocktails and drinks receptions.

KIN HOUSE

FITZ BAR

Open until late, our main bar is connected to the Drawing Room and offers a curated range of whiskies, tequila, beer and cocktails. We can host wine tastings and cocktail-making classes here.





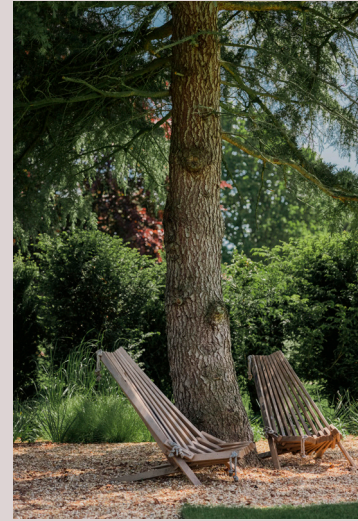
KILVERT HALL & BAR

Light and airy with vaulted ceilings and tiled columns, our largest space, Kilvert Hall, is in a separate wing of the house.

It's connected to Kilvert Bar – our main party space with an Art Deco-inspired marble bar, hidden performance area and checkerboard-tiled dance floor.



KIN HOUSE



THE GARDEN HOUSE

Inspired by the quintessential British summer house, our Garden House is flooded with natural light, filled with greenery and planting — including an ancient fig tree — and even a decorative terracotta-pot alcove made by our shell grotto artist, Mel Campion.

It can fit up to 200 guests for drinks receptions, and can be used as a dining space. Large vaulted doors open up into the walled garden, so drinks receptions can also take place outside.



The Garden House also provides a space for creative workshops such as pottery, painting and floristry.

KIN HOUSE



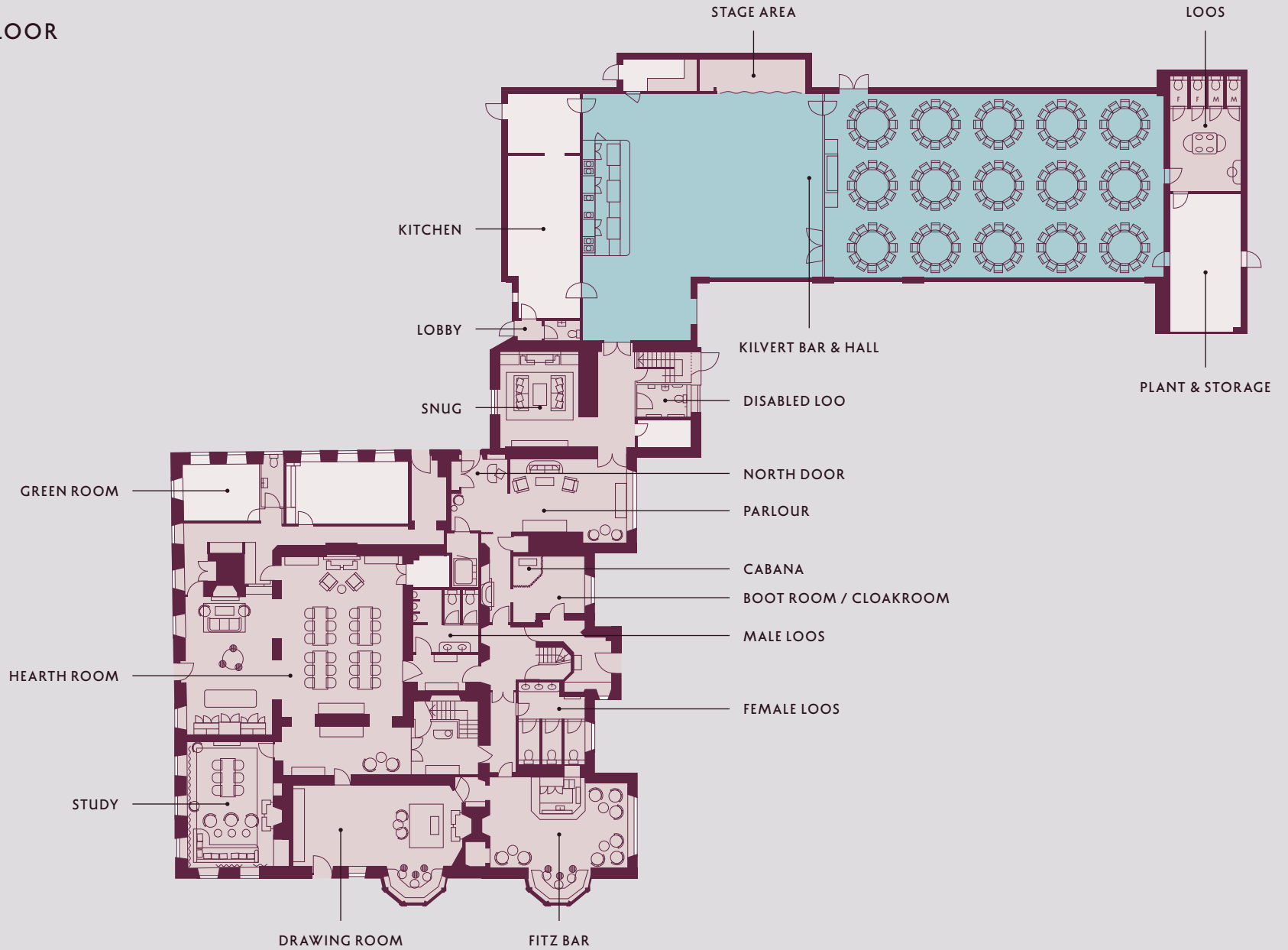


SET-UPS & CAPACITIES

Chapter 02

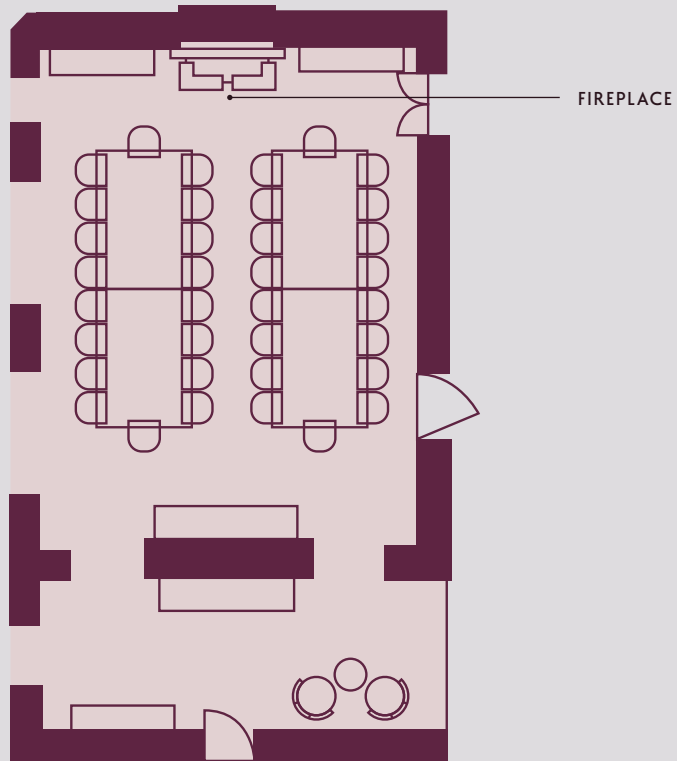
KIN HOUSE

GROUND FLOOR



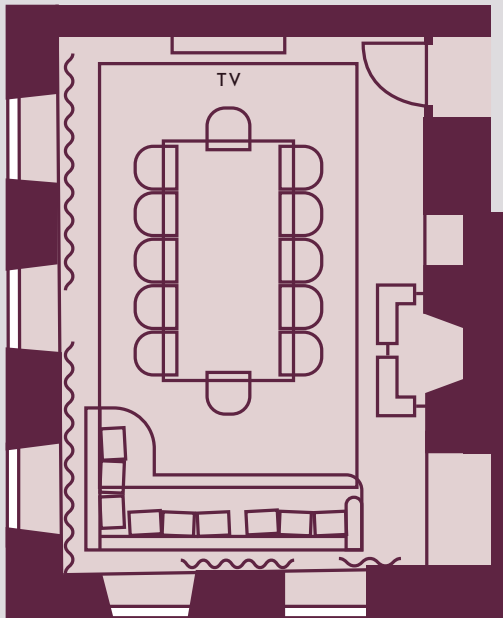
KIN HOUSE

HEARTH ROOM

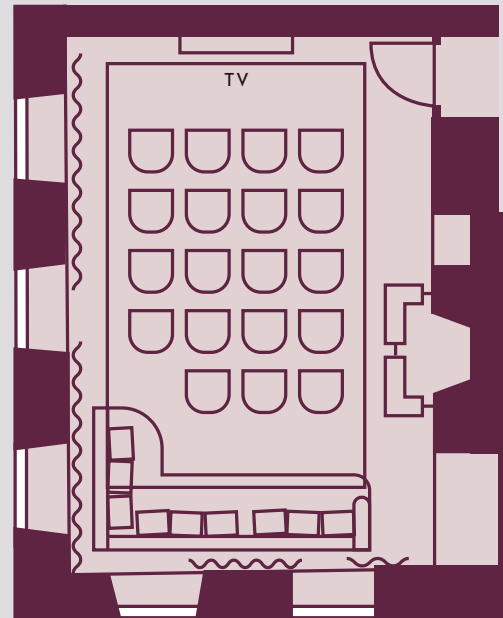


36 SEATED

THE STUDY

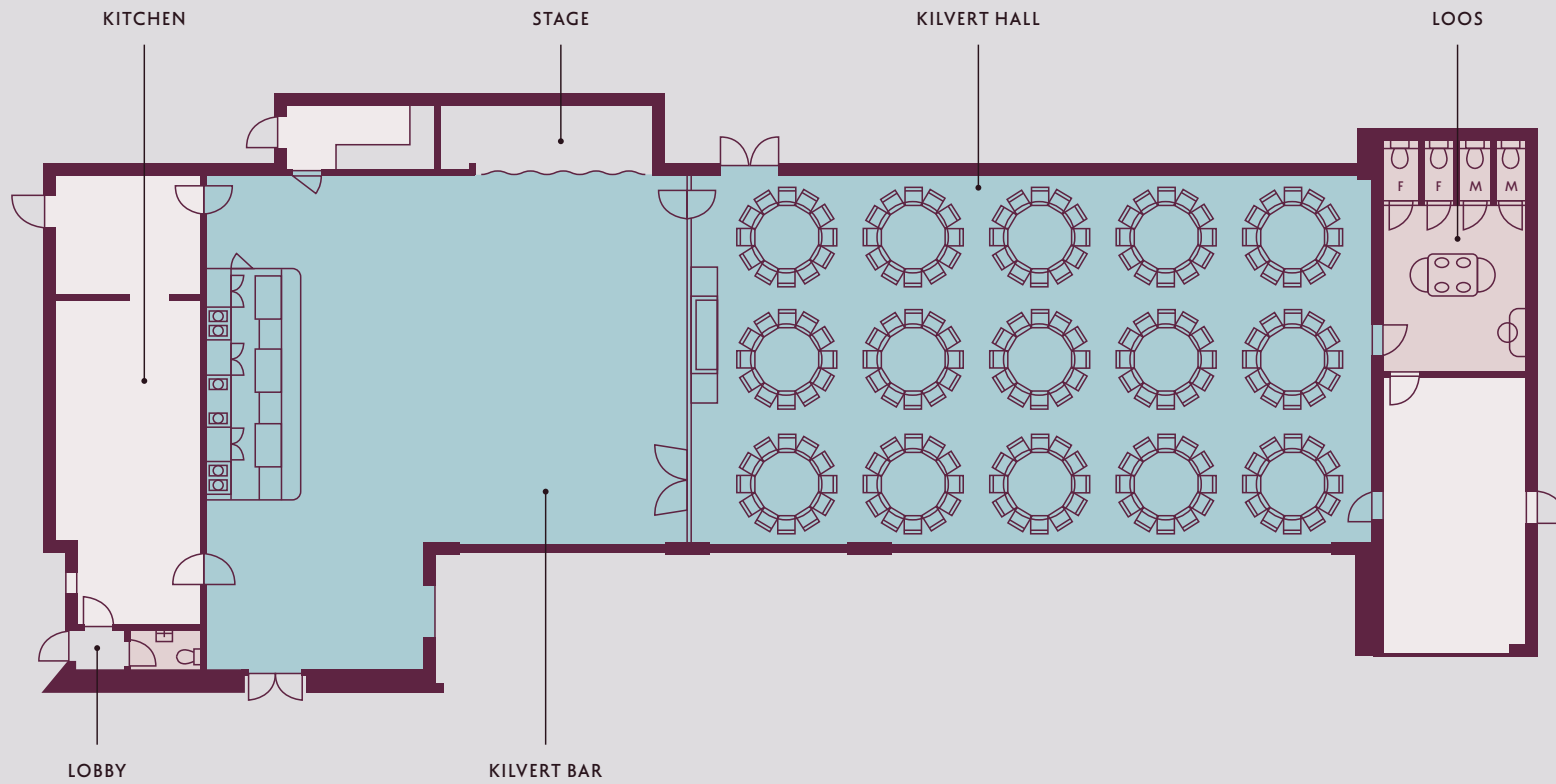


12 SEATED

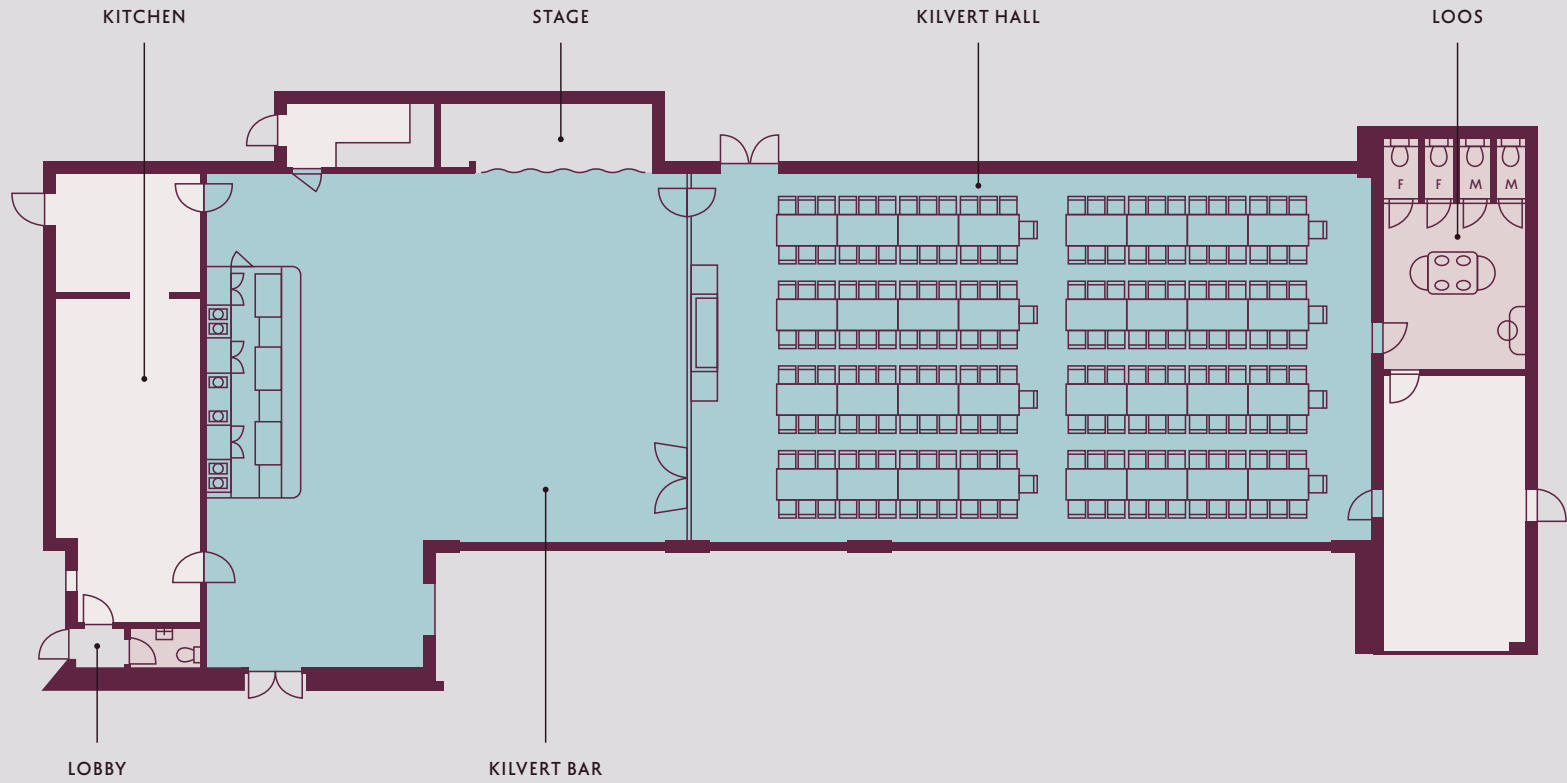


24 THEATRE-STYLE

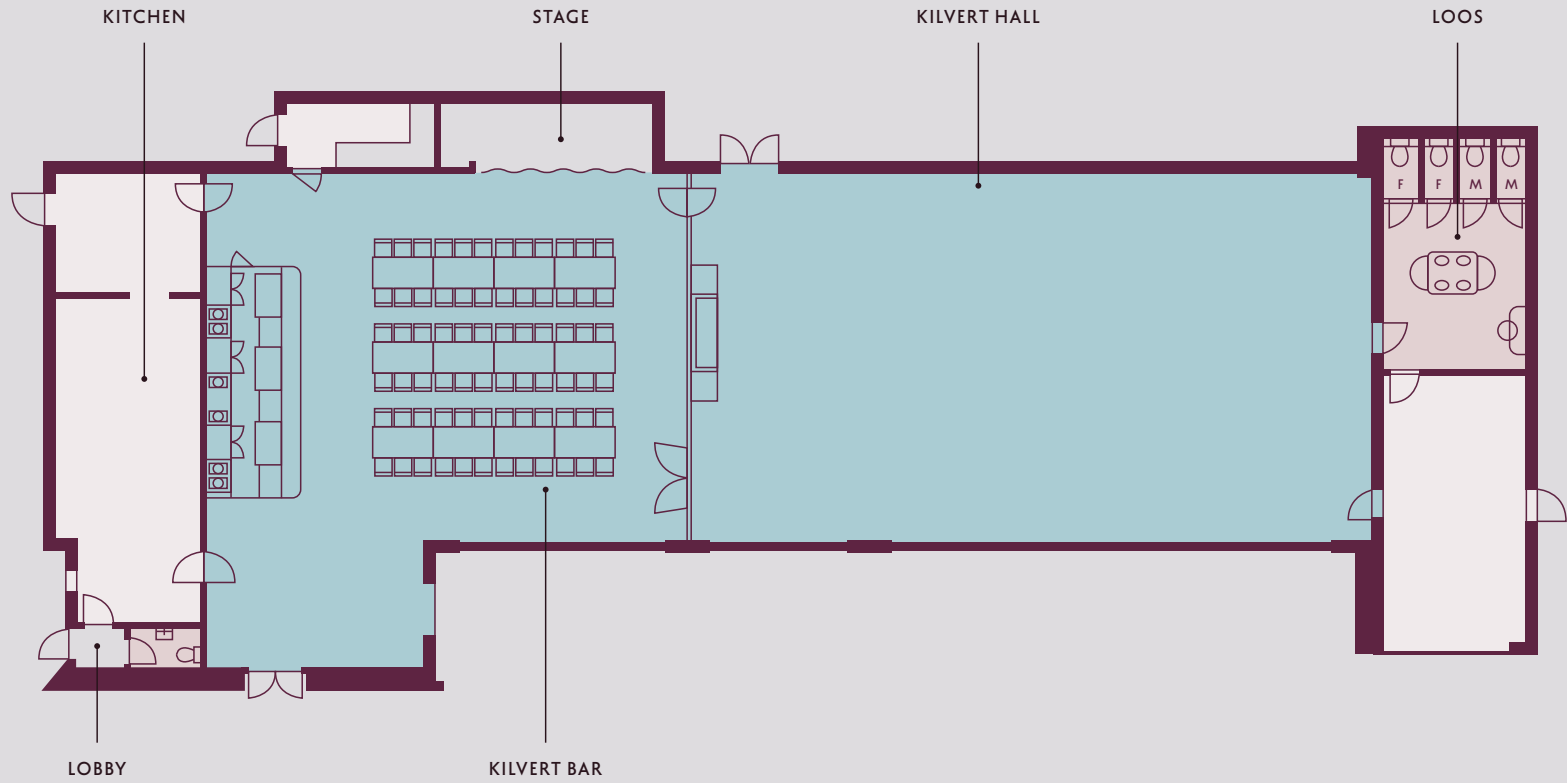
KILVERT HALL — 180 SEATED (ROUND TABLES)



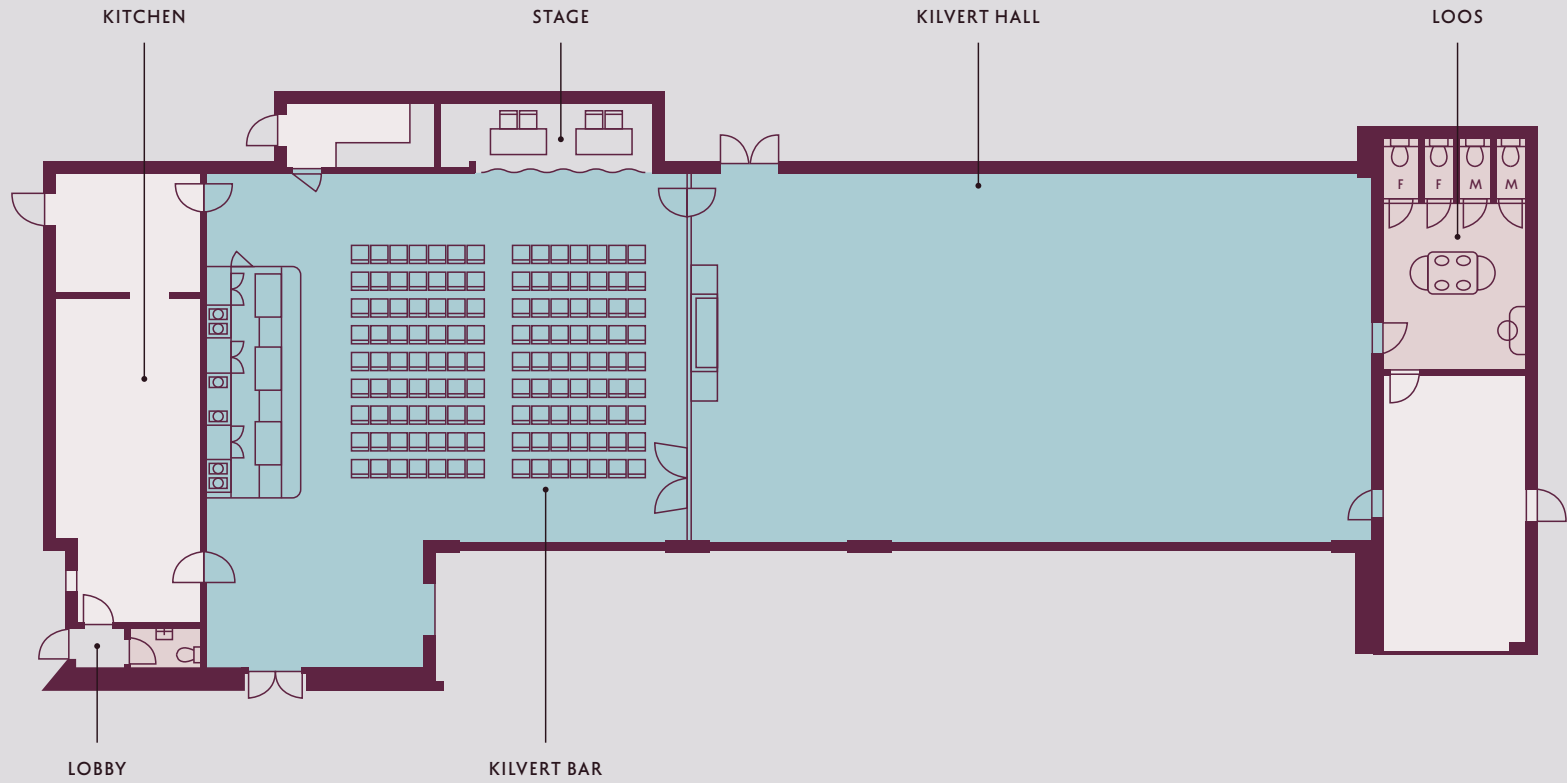
KILVERT HALL — 200 SEATED (LONG TABLES)



KILVERT BAR — 60 SEATED



KILVERT BAR — 126 SEATED (THEATRE-STYLE)



ROOM SPECIFICATIONS

ROOM	SEATED	STANDING	THEATRE	AV CAPABILITY
FITZ BAR	-	50*	-	-
DRAWING ROOM	-	50**	-	-
STUDY	12	-	24	YES
HEARTH ROOM	36	100	80	YES
KILVERT BAR	60	200	126	YES
KILVERT HALL	200***	400	200	YES

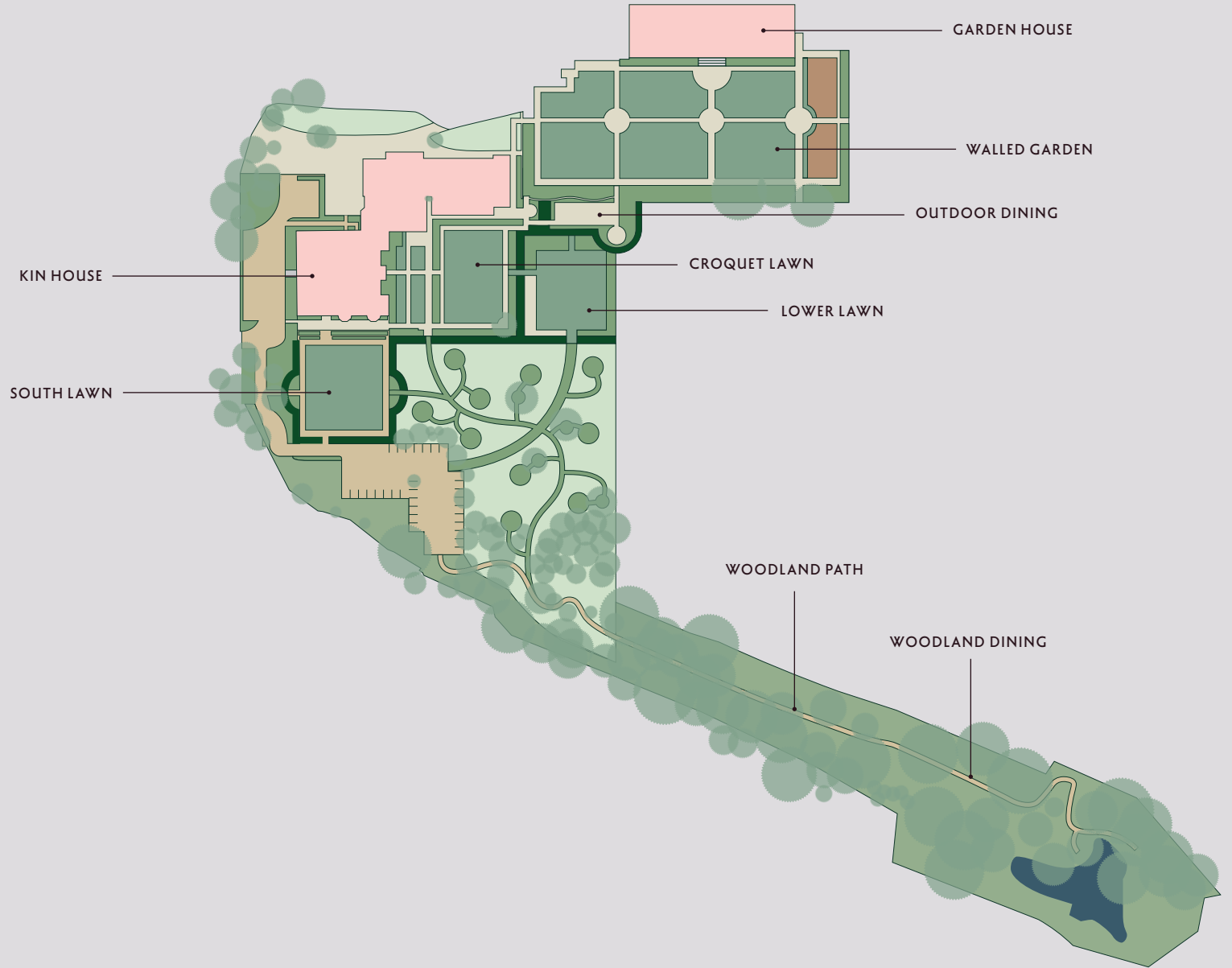
* 100 when combined with Drawing Room

** 100 with Fitz Bar

*** 200 on long tables, 180 on round tables

KIN HOUSE

HOUSE & GROUNDS



DO

Chapter 03



OUR GROUNDS

The house is set in 10 acres of gardens and private woodland, featuring a croquet lawn, terraces and sun loungers. In summer we can arrange picnics, woodland lunches, and outdoor dining by the walled garden, with food cooked in front of you in our wood oven.



THINGS TO DO

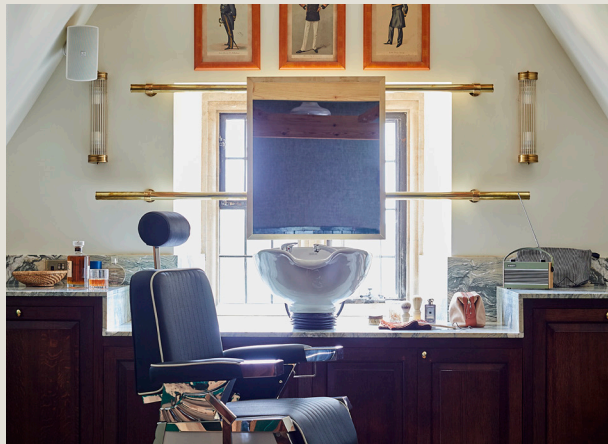
We can organise a range of activities to keep you busy while you're here. Movie nights, yoga, sound baths, massages, lawn games and foraging walks are just a few of the things we can line up. There's also plenty to do on our doorstep, from horse riding and golf, to wild swimming and shooting. Please ask to see our activities list.



BEAUTY & GROOMING

The Dressing Room is kitted out with hairdryers, state-of-the-art lighting, a shower and changing space. Squashy swivel chairs line a pink marble bar, which has a hair-washing station and oversized mirror for all your sprucing needs. It's the perfect place for having nail treatments, massages and blow dries.

Tucked away on the top floor you'll find our speakeasy-style Barbers, where we can provide a range of relaxing grooming treatments.



A photograph of a bedroom interior, framed by a decorative white border. The room features a bed with white linens and a book on it, a fireplace with a wooden mantel, and a window with a red and white checkered pattern. The word "SLEEP" is overlaid in large white letters.

SLEEP

Chapter 04

BEDROOMS

Our 12 bedrooms have everything you need for a great night's sleep – think big beds and fluffy pillows aplenty – plus little extras such as help-yourself mini bars, cosy robes and hairdryers. Each room has its own bathroom with a rainforest shower, and some come with bathtubs big enough for two.



KIN HOUSE





A still life composition featuring fresh produce and dining items. In the center, a wooden cutting board holds a green tomato, an orange cherry tomato, a red bell pepper, a sliced fig, and a small terracotta pot with soil and three carrots. To the left, there are slices of rustic bread, a red tomato, and green herbs. In the foreground, a lit candle in a glass holder, a glass of water, and a glass of white wine are visible. The entire scene is set on a bed of green moss and small white flowers, framed by a decorative white border.

FEAST

Chapter 05

FEAST

Our food philosophy is simple: delicious ingredients and unfussy cooking that celebrates the joy of eating. From help-yourself mini bars in our bedrooms, to comforting cooked breakfasts and woodland feasts, you won't go hungry while you're with us. Please get in touch for more information on menus and pricing.







GALLERY

Chapter 05

KIN HOUSE





KIN HOUSE





INFO

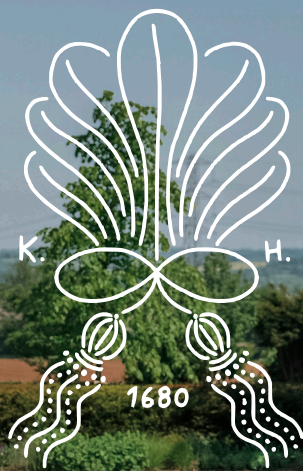
Chapter 06

WANT TO KNOW MORE?

Send us a note or come visit — we'd love to show you around.

We'd be happy to pick you up from the nearest train station which is Chippenham. Just 1hr10 from London Paddington, 25 minutes from Bristol Temple Meads, and 11 minutes from Bath Spa.

Please get in touch with us at hello@kinhouse.co.uk, or give us a call on 01249 479385.



Kington Langley, Wiltshire, SN15 5NA