

# THE VIEW FROM THE SHARD

Events atop London's most iconic building



## THE VENUE

### Level 72

The highest publicly accessible level of The Shard, this floor is exposed to the elements and offers the chance to experience the sounds of the city beneath. Gaze up to the shards of glass that form the top of the sculptural building as they disappear into the sky.

### Level 69

Benefits from triple height ceilings so the space is flooded with natural sun light during the day, through to views of the city lights at night. Here you will find a grand piano, contemporary furniture and a bar.

### Level 68

High-speed lifts whisk guests to level 68. The panoramic views are unveiled as guests disembark the lifts on level 68. Here even the unique washrooms boast The Shard's iconic floor to ceiling glass walls.

### Level 1

Guests arrive at The View from The Shard via a private entrance on Joiner Street, into a welcoming reception space with digital branding opportunities including a customisable green screen.











## WHAT WE OFFER

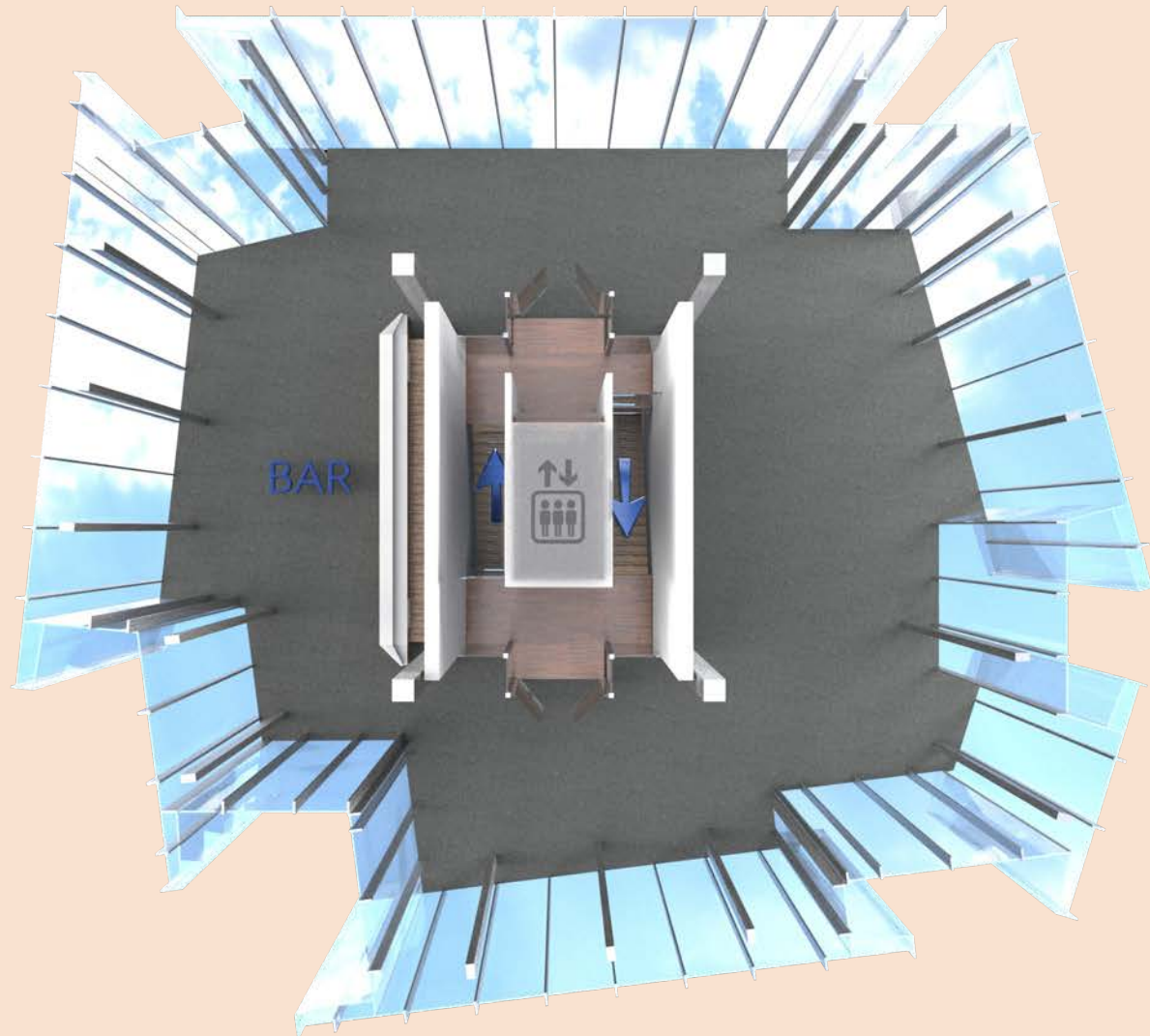
- \* With a combined 5456 sq ft The View can accommodate up to 375 guests during the summer months (300 in winter) for a standing reception and up to 120 for private dining
- \* 24 hour access and event license
- \* Resident catering by creative chefs and coordinators tailored to all budgets and preferences
- \* No minimum bar spend and bespoke packages available
- \* WiFi suitable for live streaming and hybrid events
- \* Event management by highly experienced professionals to coordinate and guide you from concept to execution
- \* Guest Ambassadors, Housekeeping and Security teams
- \* Digital Branding opportunities and LED lighting to match the look and feel of each brand
- \* Versatile event space with over 5000 ft of flexible space for zoning and theming
- \* Step free access throughout the entire fully accessible
- \* Entertainment with a range of event hosts, tour guides and performers available



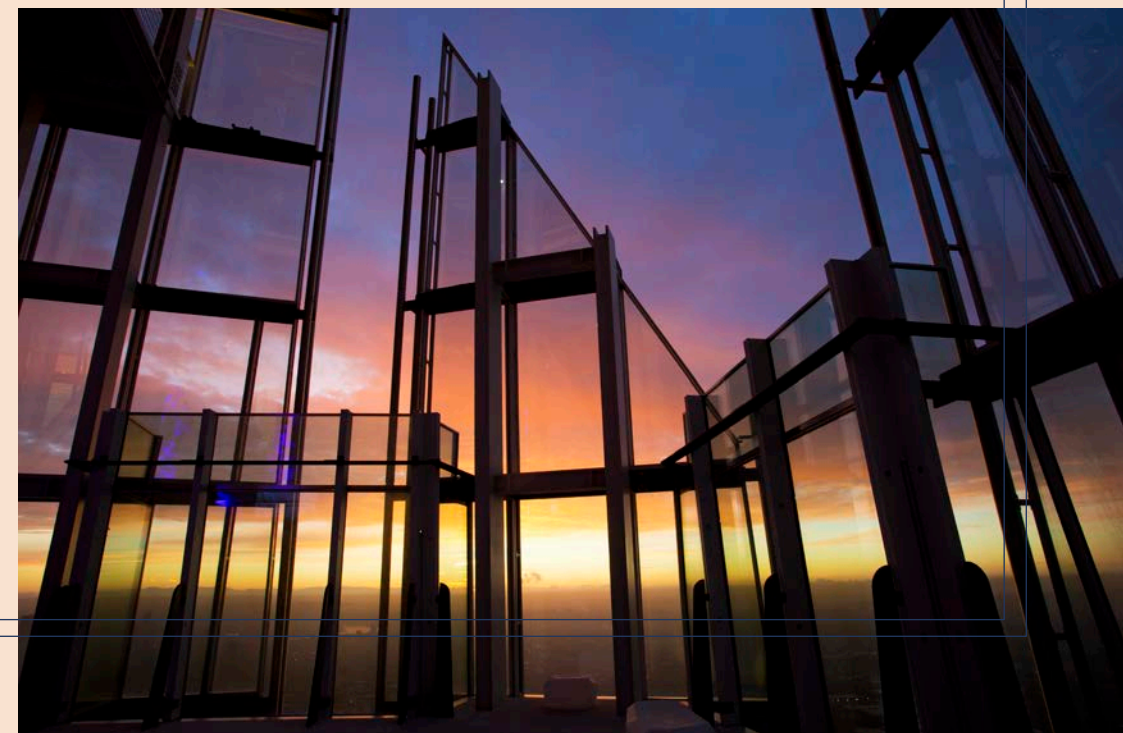
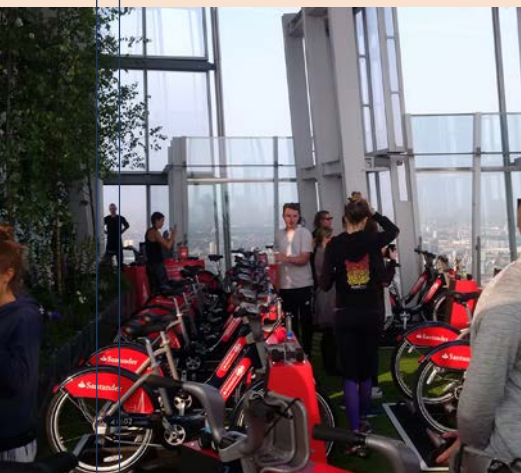




## LEVEL 72



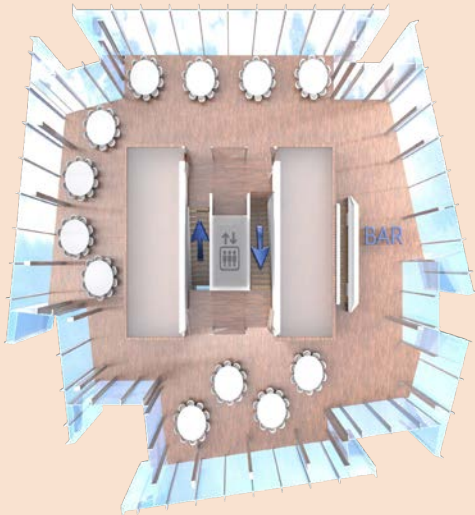




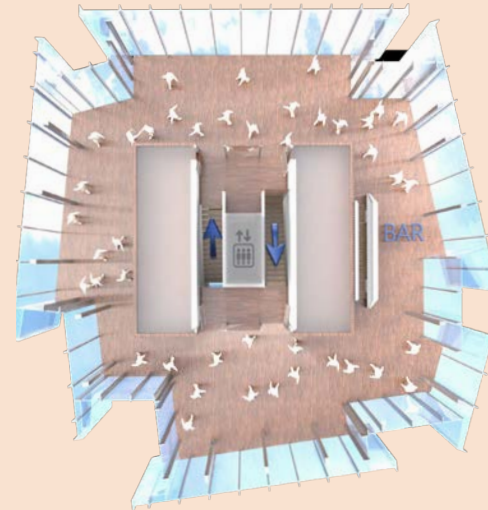


## LEVEL 69

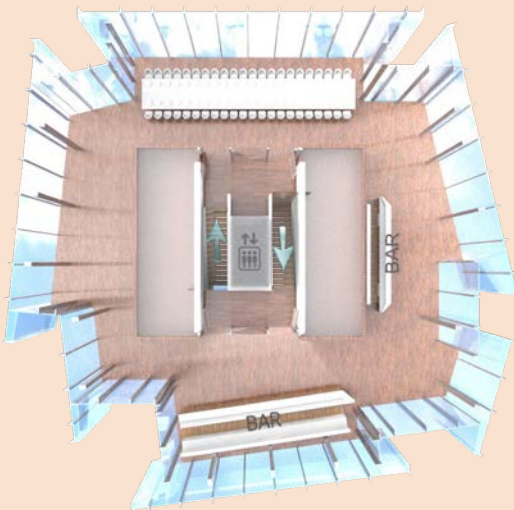
Seated dining



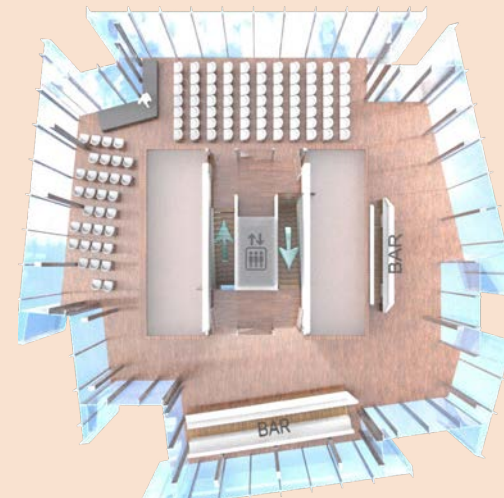
Standing



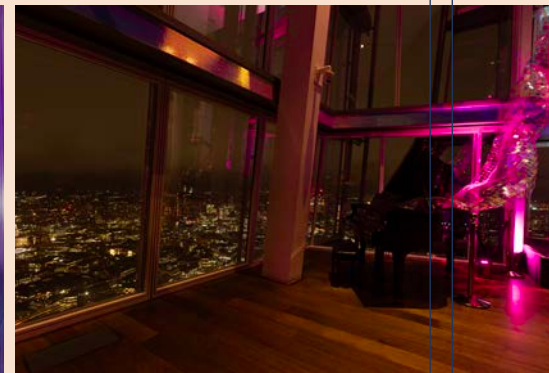
Banquet



Theatre

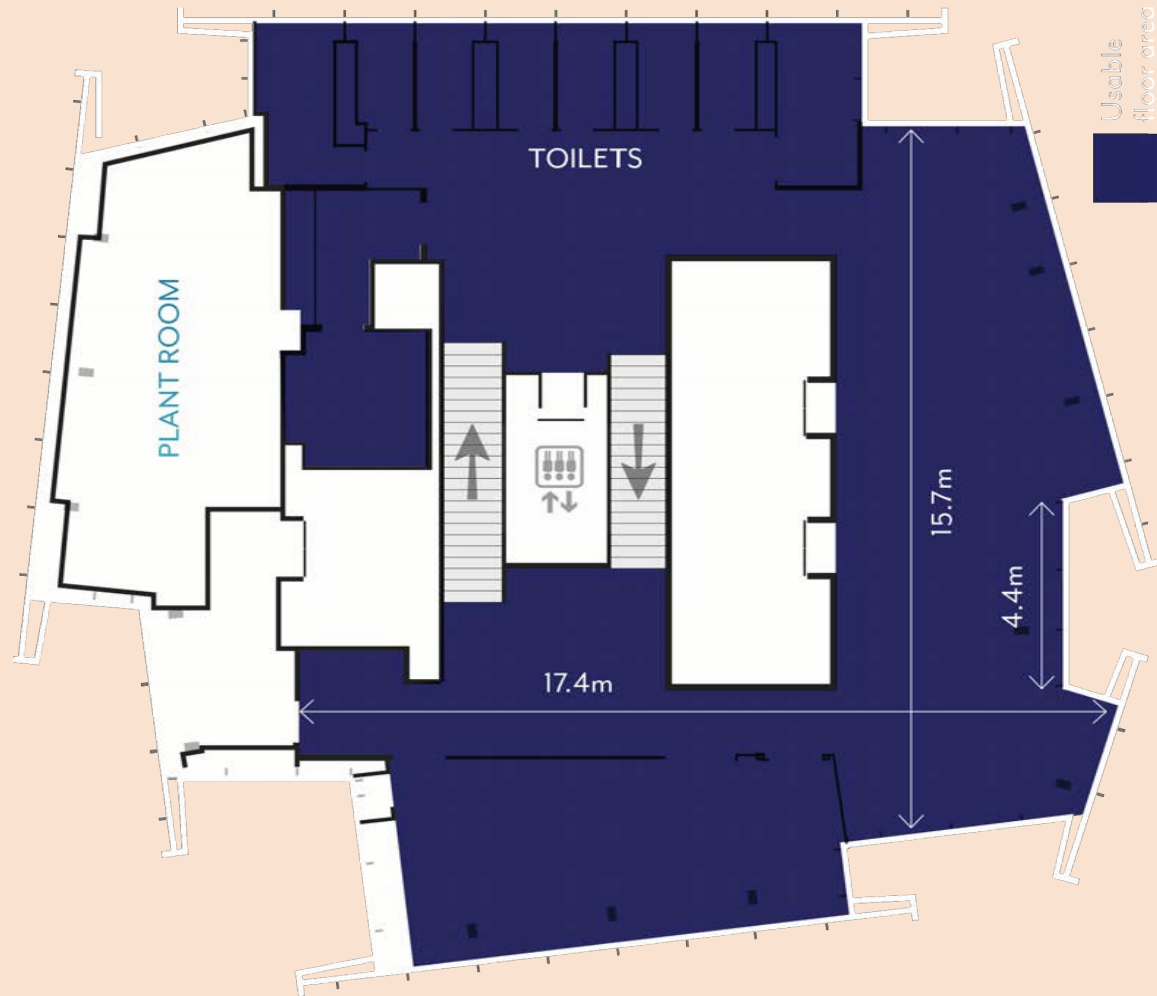








## LEVEL 68









## SAMPLE MENUS

### CANAPÉS

Please choose a minimum of 6 canapés  
including a minimum of 2 vegetarian and 1 sweet option

Bang Bang chicken, toasted peanut and chili

Waterloo brie & caramelised fig (v)

Smoked mackerel, tarragon, horseradish vol au vent

Stuffed vine leaves, roasted aubergine babaganoush (v)

Salt & pepper salami, grilled artichoke, sun blush tomato

Spinach & beetroot hummus wraps (v)

Miso Mushroom Rolls (v)

Red Leicester & English mustard straw (v)

White chocolate & cranberry fudge

### BOWL FOOD

Braised Beef shin, truffle mash & wild mushroom

Korean BBQ salmon with Baby Pak choi , crispy noodles

Lentil dahl with red onion spinach & cauliflower Bhaji, minted coconut yogurt

Lemon & bergamot posset, English raspberries & lemon verbena

Miso plum, lime curd & caramilsed white chocolate

### DRINKS

We have an extensive wine list and a selection of classic and  
bespoke cocktails that can be tailored to your needs.











## CONTACT US

[events@theviewfromtheshard](mailto:events@theviewfromtheshard)

The Shard, 32 London Bridge Street, London, SE1 9SG

[www.theviewfromtheshard.com](http://www.theviewfromtheshard.com)

[@shardview](#)

